

LEASE – VILLAGE PLACE

4947 Winters Chapel Rd, Dunwoody, GA



2 - 1200 SF Retail Spaces Available

Zoning— C1

55 Surface Spaces

Next to Walmart Neighborhood Market

Very Visible

Heavy Foot and Vehicle Traffic

2 Spaces

1200 SF/SPACE

For More Information Contact:

Tom Forkner : 678-367-0682 Direct

Graham Owens : 770-695-8080 Direct

The Quin Group, Inc. 770-448-3385

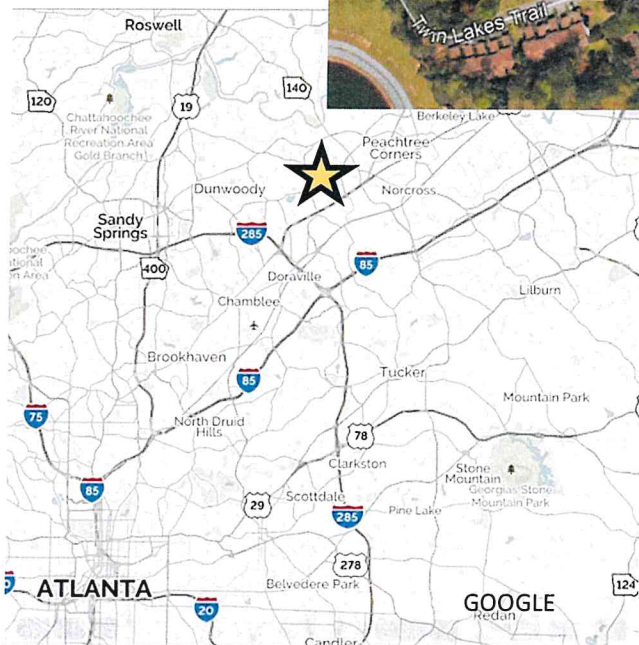


The Quin Group Inc.
— Commercial Real Estate —

*No warranty, expressed or implied, is made as to the accuracy of the information contained herein.
Information should be independently confirmed within an applicable due diligence period.*

ARIEL AND LOCATION

4947 Winters Chapel Rd, Dunwoody, GA



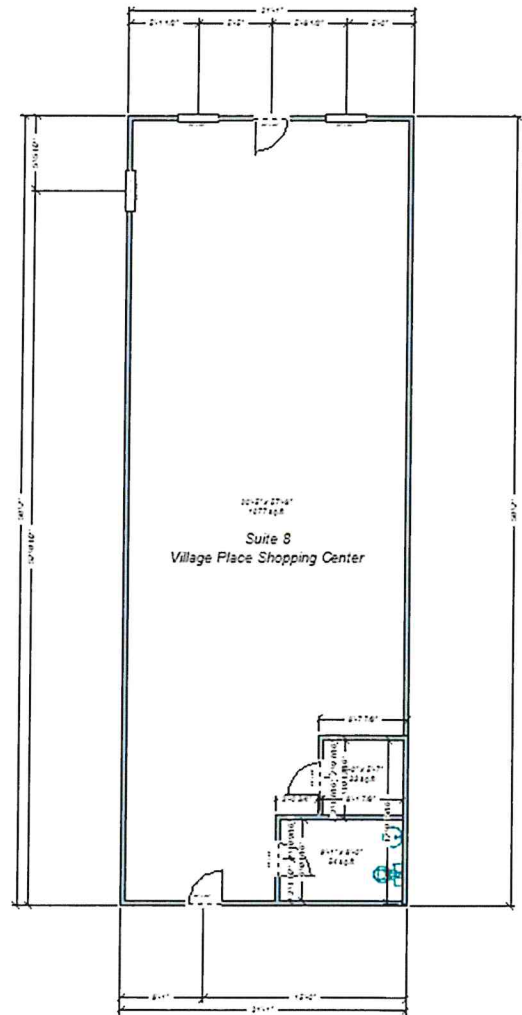
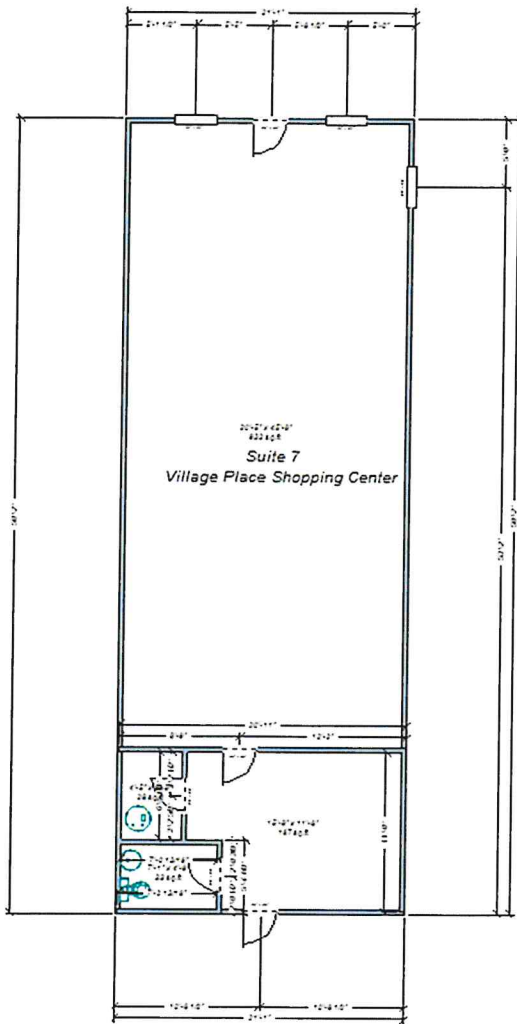
The Quin Group Inc.
== Commercial Real Estate ==

No warranty, expressed or implied, is made as to the accuracy of the information contained herein.
Information should be independently confirmed within an applicable due diligence period.

FLOOR PLAN

4947 Winters Chapel Rd, Dunwoody, GA

\$18/SF Modified Gross



The Quin Group Inc.
Commercial Real Estate

No warranty, expressed or implied, is made as to the accuracy of the information contained herein.
Information should be independently confirmed within an applicable due diligence period.

DEMOGRAPHICS

4947 Winters Chapel Rd, Dunwoody, GA

Population	1 Mile	3 Mile	5 Mile
2018 Total Population:	13,093	86,951	273,180
2023 Population:	14,127	93,247	295,393
Pop Growth 2018-2023:	7.90%	7.24%	8.13%
Average Age:	34.10	36.20	35.80
Households			
2018 Total Households:	4,624	33,434	104,813
HH Growth 2018-2023:	7.72%	7.01%	7.87%
Median Household Inc:	\$50,983	\$62,178	\$65,441
Avg Household Size:	2.80	2.60	2.60
2018 Avg HH Vehicles:	2.00	2.00	2.00
Housing			
Median Home Value:	\$277,986	\$317,758	\$317,780
Median Year Built:	1982	1983	1987

COSTAR



The Quin Group Inc.
 == Commercial Real Estate ==

*No warranty, expressed or implied, is made as to the accuracy of the information contained herein.
 Information should be independently confirmed within an applicable due diligence period.*