

MDA
 MCFARLAND-DYER
 & ASSOCIATES
 1000 Peachtree Street, N.W.
 Atlanta, Georgia 30309
 Phone: (770) 932-6550
 Fax: (770) 932-6551
 WWW.MDAONLINE.NET

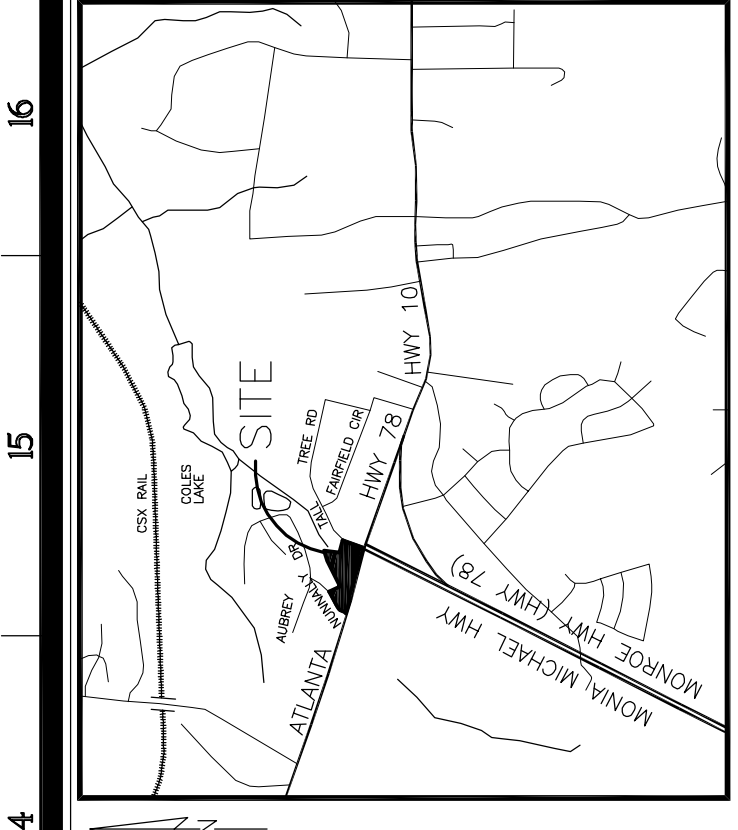
TRANSLARKE PROPERTIES, LLC
 OWNER:
 5855 JIMMY CARTER BLVD.
 NORCROSS, GEORGIA 30071
 PHONE (770) 448-3385
 MR. TOM FORKNER

ATHENS AUTO MALL
 PROJECT:
 5855 JIMMY CARTER BLVD., SUITE 210
 NORCROSS, GEORGIA 30071
 ATHENS-CLARKE COUNTY, GEORGIA

| DATE | DESCRIPTION |
|------------|-----------------|
| 07/28/2007 | FIRST SUBMITTAL |

JOB NO: 04-0020
 DRAWN BY: CSW
 CHECKED BY: JCW & ADW
 COPYRIGHT 2007
 MCFARLAND-DYER & ASSOCIATES, INC.

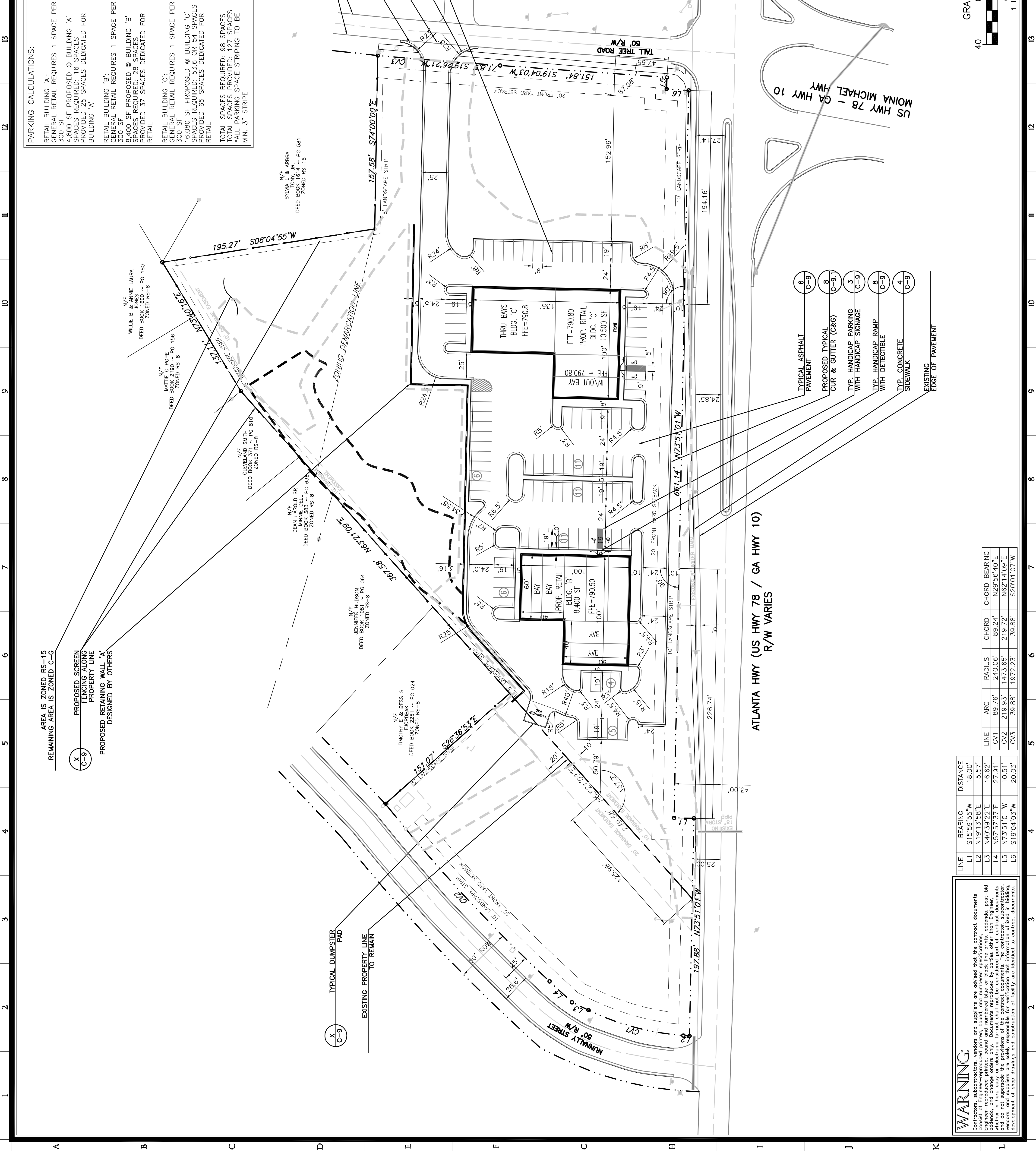
SITE PLAN
C-2



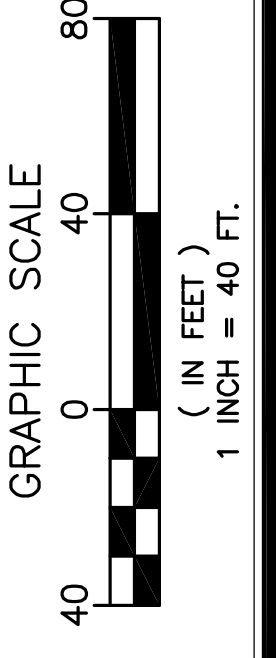
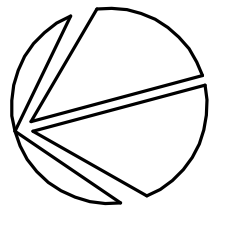
PARKING CALCULATIONS:
 RETAIL BUILDING 'A':
 GENERAL RETAIL REQUIRES 1 SPACE PER 300 SF PROPOSED @ BUILDING 'A'
 5,475 SF PROPOSED @ BUILDING 'A'
 SPACES REQUIRED: 18 SPACES
 PROVIDED 25 SPACES DEDICATED FOR BUILDING 'A'
 RETAIL BUILDING 'B':
 GENERAL RETAIL REQUIRES 1 SPACE PER 300 SF
 8,400 SF PROPOSED @ BUILDING 'B'
 SPACES REQUIRED: 28 SPACES
 PROVIDED 37 SPACES DEDICATED FOR RETAIL
 RETAIL BUILDING 'C':
 GENERAL RETAIL REQUIRES 1 SPACE PER 300 SF
 16,080 SF PROPOSED @ BUILDING 'C'
 SPACES REQUIRED: 53.6 OR 54 SPACES
 PROVIDED 65 SPACES DEDICATED FOR RETAIL
 TOTAL SPACES REQUIRED: 98 SPACES
 TOTAL SPACES PROVIDED: 127 SPACES
 *ALL PARKING SPACE STRIPING TO BE MIN. 3" STRIPE

GENERAL NOTES

1. SITE AREA: 5.475 ACRES
2. EXISTING ZONING: C-G, AND RS-15
3. LOCATION: ATLANTA HIGHWAY, CITY OF ATHENS, CLARKE COUNTY, GEORGIA
4. EXISTING USE: WOODED VACANT LOT
5. PROPOSED USE: AUTOMOTIVE RELATED RETAIL
6. APPLICANT: TRANSLARKE PROPERTIES, LLC 5855 JIMMY CARTER BLVD., SUITE 210 NORCROSS, GEORGIA 30071
7. OWNER/DEVELOPER: TRANSLARKE PROPERTIES, LLC 5855 JIMMY CARTER BLVD., SUITE 210 NORCROSS, GEORGIA 30071
8. STORMWATER MANAGEMENT SHALL BE IN ACCORDANCE WITH COUNTY, STATE AND OTHER APPROPRIATE ORDINANCES AND REGULATIONS IN EFFECT AT TIME OF CONSTRUCTION PLAN APPROVAL.
9. WATER SERVICE PROVIDED BY ATHENS/CLARKE COUNTY
10. SEWER SERVICE IS PROVIDED BY A GRAVITY FLOW SYSTEM BY ATHENS/CLARKE COUNTY
11. F.I.R.M. MAP NUMBERS 1300400005C & 1300400020C; EFFECTIVE 5-04-01992Z, INDICATES THAT THIS TRACT DOES NOT LIE IN AN AREA DESIGNATED AS HAVING FLOOD HAZARD.
12. UNLESS OTHERWISE SHOWN ALL DIMENSIONS ARE TO THE FACE OF CURB.



ATLANTA HWY (US HWY 78 / GA HWY 10)
 R/W VARIES



24 HOUR CONTACT
 TRANSLARKE PROPERTIES, LLC
 TOM FOR KNER
 770-448-3385
 IF YOU DIG IN GEORGIA
 CALL US FIRST
 (800) 282-7411
 UTILITIES PROTECTION CENTER
 IT'S THE LAW

| LINE | BEARING | DISTANCE | CHORD | CHORD BEARING |
|------|-------------|----------|---------|---------------|
| L1 | S15°59'55"W | 18.00' | | |
| L2 | N19°13'58"E | 5.57' | | |
| L3 | N40°39'22"E | 16.62' | | |
| L4 | N57°57'37"E | 27.91' | | |
| L5 | N73°51'01"W | 10.51' | | |
| L6 | S19°04'03"W | 20.03' | | |
| CV1 | 89.76° | 240.06' | 89.24' | N29°56'40"E |
| CV2 | 219.53° | 1473.65' | 219.72' | N62°14'09"E |
| CV3 | 39.88° | 1972.23' | 39.88' | S20°01'07"W |

WARNING
 Contractors, subcontractors, vendors and suppliers are advised that the contract documents consist of Engineer-reproduced printed, bound, and numbered specifications, addenda, bid-bid sheets, and change orders only. Documents reproduced by parties other than Engineer, whether in hard copy or electronic format shall not be considered part of contract documents. The Engineer shall not be responsible for verification of information utilized in bidding, development of shop drawings and construction of facility are identical to contract documents.